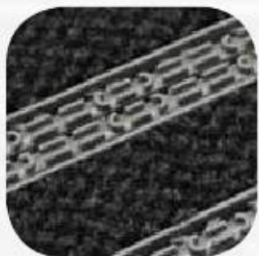


# Integra 16 mm entrance mat



Black



Grey



*Integra 16 mm heel proof entrance mat combines performance and elegance together with its unique interlocking tiles and high performance carpet inserts. Integra 16 mm is suitable for most demanding applications such as shopping centres, airports, subway stations and hotels.*

Tiles have open grid yet heel proof construction. Distinctive of Integra tile is the combination of lamellas and carpet inserts creating alternating zones for scraping, cleaning and absorbing. Lamellas form the scraping and cleaning part of the tile and carpet inserts absorbing part of the tile.

Lamellas of tile remove grit and strong hard fibres of carpet insert remove dust and fine fibres absorb moisture. The steady rhythm of lamellas and plain carpet areas yields a unique design effect of Integra.

Integra 16 mm heel proof interlocking tile is fully compatible with the Combo 16 mm plain tile.

## Specifications

<b>Material</b>	UV-resistant vinyl 100 % recyclable
<b>Tile size</b>	40 x 14 cm
<b>Packaging</b>	20 tiles / pckg (= ca. 1 m <sup>2</sup> )
<b>Height</b>	16 mm
<b>Weight</b>	11 kg/m <sup>2</sup>
<b>Tile colour</b>	Black, dark grey
<b>Insert pile material</b>	100% polyamide
<b>Insert colours</b>	Black, grey
<b>Temperature resistance</b>	-20 °C - +70 °C
<b>Rolling load</b>	KfB dynamic test: 300 kg per wheel
<b>Fire classification</b>	EN 13501: Bfl - s1
<b>Slip resistance</b>	DIN 51130: R11
<b>Emissions</b>	ISO 16000-9: TVOC class A+

## Accessories

Plastic edging 16 mm x 300 cm
Alu edging 16/20 mm x 300 cm
Anchors 16 mm