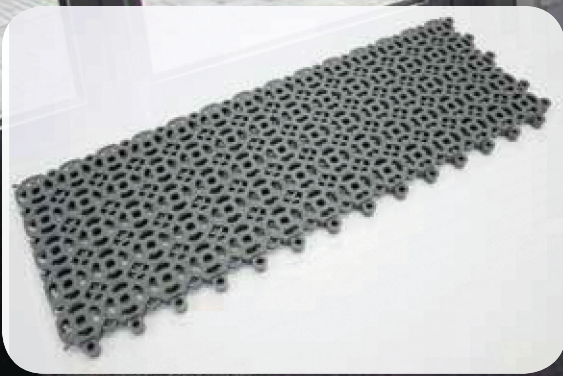


# Combo 9 mm entrance mat



Dark grey



**Combo 9 mm is heavy duty primary entrance mat for all high and extreme traffic conditions including shopping centres, public buildings, block of flats, office buildings and schools. It is durable heel proof interlocking modular mat for both internal and external applications. Combo stops dirt, sand and debris in the entrance area before they enter the building.**

When combined with Combo 16 mm entrance mat, slim Combo 9 mm leaves recessed area for carpets – and creates a unique concept – Combo Matwell system.

Combo Matwell system is an exciting concept that allows you create a recessed matwell without the complication or cost of having to cut a matwell into the floor. It is ideal for existing buildings without a dedicated matwell.

Combo 9 mm works with Combo 16mm entrance mat to form a ready made matwell into which mats can be placed. Combo 9 mm leaves a 7 mm recess for mat or carpet inserts, when combined with the Combo 16 mm entrance mat. The recessed area can take most types of carpet inserts, dust control mats and logo mats.

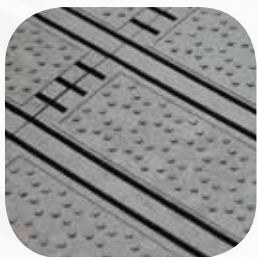
## Specifications

<b>Tile material</b>	UV-resistant vinyl/NBR 100 % recyclable
<b>Tile size</b>	40 x 14 cm
<b>Packaging</b>	36 tiles / package (= 1.94 m <sup>2</sup> )
<b>Height</b>	9 mm
<b>Weight</b>	4,7 kg/m <sup>2</sup>
<b>Colour</b>	Dark grey
<b>Temperature resistance</b>	-35 °C - +70 °C
<b>Emissions</b>	ISO 16000-9: TVOC class A+

## Accessories

Alu edging 9/12 mm, 300 cm

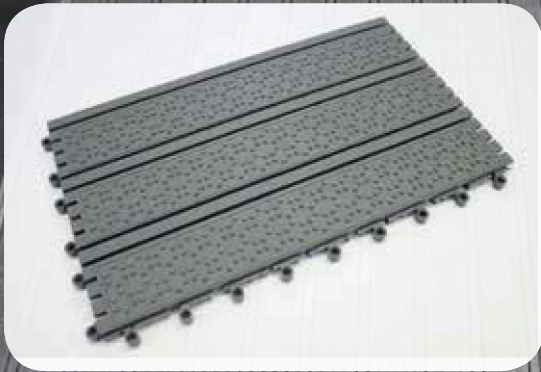
# Combo 11 mm entrance mat



Dark grey



Black



*A functional Combo11 mm entrance mat has highly effective cleaning action and is extremely durable. Unique pattern of parallel channels and resilient non slip knobs on the surface of the tile capture dirt, sand and debris in the entrance area.*

Combo heavy duty entrance mat is ideally suited for entranceways with high density foot and trolley traffic, such as airports, subway stations, shops, shopping centres, hospitals and schools. Combo 11 mm is strong matting for a long life span in demanding indoor and outdoor conditions.

Combo 11 has an open construction and innovative design that gives high dirt and dust retention and keeps surface safe and clean.

Combo 11 mm heel proof interlocking tile is fully compatible with the Integra 11 mm tiles.

### Specifications

<b>Material</b>	UV-resistant vinyl/NBR 100 % recyclable
<b>Tile size</b>	30,5 x 18,3 cm
<b>Packaging</b>	18 tiles / package (1 m <sup>2</sup> )
<b>Height</b>	11 mm
<b>Weight</b>	6,6 kg/m <sup>2</sup>
<b>Tile colour</b>	Dark grey, black
<b>Temperature resistance</b>	-35 °C - +70 °C

### Accessories

Alu edging 9/12 mm, 300 cm

Anchors 12 mm

# Combo 16 mm entrance mat



Dark grey



Black



**Combo 16 mm heel proof tile scrapes dirt and mud. Combo 16 is extremely strong matting for a long life span in demanding indoor and outdoor conditions. Open design of lamellas allows debris fall through the tile. A functional Combo entrance matting system stops dirt, sand and debris in the entrance area.**

Combo 16 mm provides maximum undershoe brushing as well as dirt removal. Open grid of lamellas allows debris fall through the tile. Lightweight Combo is easy to handle and roll up for maintenance and cleaning.

Combo offers excellent performance for heavy foot and trolley traffic.

Combo 16 mm heel proof interlocking tile is fully compatible with the Integra 16 mm carpet tile.

## Specifications

<b>Material</b>	UV-resistant vinyl 100 % recyclable
<b>Tile size</b>	40 x 14 cm
<b>Packaging</b>	20 tiles / package (= 1.07 m <sup>2</sup> )
<b>Height</b>	16 mm
<b>Weight</b>	9.8 kg / m <sup>2</sup>
<b>Tile colour</b>	Dark grey, black
<b>Temperature resistance</b>	-20 °C - +70 °C
<b>Rolling load</b>	KfB dynamic test: 350 kg per wheel
<b>Fire classification</b>	EN 13501: Bfl - s1
<b>Slip resistance</b>	DIN 51130: R10
<b>Emissions</b>	ISO 16000-9: TVOC class A+

## Accessories

Alu edging 16/20 mm, 300 cm

Anchors 16 mm